

بِسْمِ اللَّهِ الرَّحْمَنِ الرَّحِيمِ



IN THE NAME OF ALLAH, THE MOST GRACIOUS, THE MOST MERCIFUL.



"Every student can learn, just not on the same day, or in the same way."
(George Evans)

Foreword By **THE CHIEF EXECUTIVE**

Ever since taking charge of the City High School educational outfits, my team has strived to pursue educational excellence in the realm to matriculation education. The strong academic policy predominantly based on our system of education.

Adopted in City High School; creates gracious and stimulating atmosphere where students are able to develop their personal skills and explore their potentials due to the school's rich integrated curriculum, co-curricular offerings and activities which include arts, outdoor activities and trips etc.

City High School is steered by qualified and well trained staff of teachers and administrators dedicated to brilliance with the objective of creating a self-esteeming student body and a community of active learners. We aim to provide an environment where the desire to learn is kindled and the learner is nurtured and encouraged to grow emotionally, mentally and spiritually. We envision each child enrolled in our schools to become sensitive not only to the environment but in this strife-torn world; to be tolerant and sensitive to each other. We hope that each City High School alumni makes a difference in life and to rise above mediocrity through their skills.

I am confident that our marvelous working team and students shall be able to face the coming challenges and fulfil the high expectation in this age to technological and information advancement, with the help of our established pedagogical approach.

Ch. Zahid Mahmood Goraya

CHIEF EXECUTIVE | G.C University, Lahore (M.A Pol. Sc)
CITY HIGH SCHOOL | Advocate High Court



Message by **THE MANAGING DIRECTOR**

It is with great pleasure that I introduce this prospectus, which provides a comprehensive overview of our institution's academic offerings, values, and vision for the future. As the Managing Director, I am privileged to oversee a diverse and dynamic learning environment where excellence in education and students' development is at the heart of everything we do.

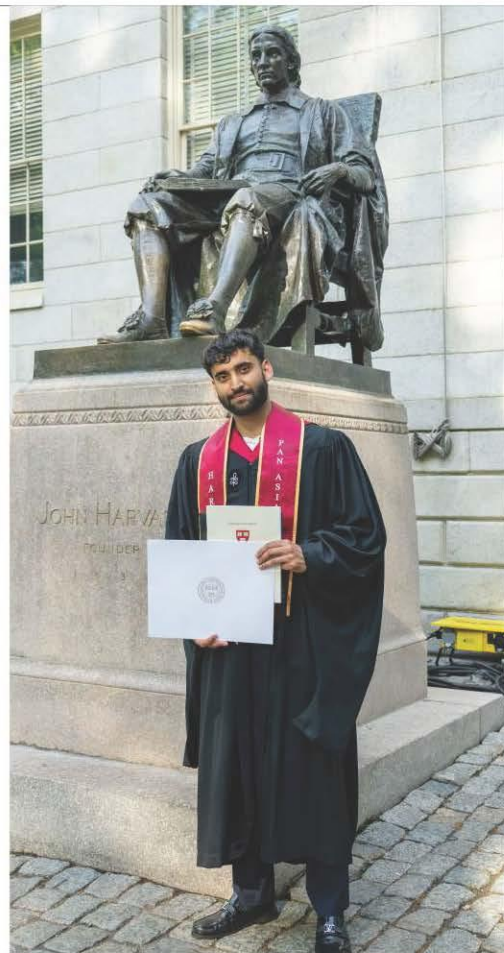
Our institution has long been committed to providing students with an intellectually stimulating and nurturing environment that prepares them for success in their chosen fields. This year we are pleased to revamp our EARLY YEARS PROGRAMME by offering a thematic learning philosophy which is designed to challenge, inspire, and equip the young minds with the skills and knowledge necessary to thrive in a rapidly evolving global landscape. Beyond the academic excellence, we aim to focus on the holistic development of our students. Our emphasis will be on critical thinking, ethical leadership, and social responsibility ensuring that our graduates not only excel in their careers but also contribute meaningfully to society.

As you explore this prospectus, I invite you to imagine your child as part of our vibrant academic community—one where your child's aspirations will be supported, his talent will be nurtured, and his potential will be fully realized.

I am confident that your time here will be transformative and enriching. We look forward to welcoming you into our community of scholars and leaders.

M. Abdullah Goraya
MANAGING DIRECTOR
CITY HIGH SCHOOL

City High School (Primary)
Beacon House School System (O-Level)
Aitchison College, Lahore (Secondary years),
Drexel University, USA (Bachelor)
Harvard University, USA (Masters)



OUR VISION

THE City High School envisions quality education by empowering students to maximize their potential.

OUR MISSION

We aim to foster an inductive learning environment where our students can develop their skills, confidence, and mindset needed to thrive academically & personally by providing a rigorous and diverse learning experience to our students & faculty.



**CRE
ATE**



PLAY



Progression of Academic Journey

EARLY YEARS (AGES 3-6)

This stage is focused on the development of basic skills such as motor skills, early literacy, and social interactions. CHS Early Years philosophy aims holistic development of the learners, it includes:



PRIMARY SCHOOL (AGES 7-11)

The curriculum becomes slightly advanced, including subjects like Science, Social Studies, Computer & Islamiyat, with more complex Math and languages. Development of social skills, critical thinking, and creativity also plays an important role in this stage.

SECONDARY SCHOOL (AGES 12-16)

In this stage, students build on the foundational knowledge from primary school and start exploring a broader range of subjects including history & Geography. Secondary school Emphasis on developing analytical thinking and problem-solving skills with a special focus on BISE results.



SALIENT FEATURES

It is a regular feature of CITY HIGH SCHOOL to conduct extra and co-curricular activities in school.

- ▶ Student Council
- ▶ Quiz Competitions
- ▶ Functions
- ▶ Oratory Competitions
- ▶ Prize Distribution
- ▶ Sports Competitions
- ▶ Excursions & Outings
- ▶ National & Religious Days Celebrations

FEATUERS



PREPARING YOUR CHILD FOR SCHOOL

- ▶ Starting school is an important phase in your child's life and by providing some experiences before the first day you will have helped him/her to make him/her confident.
- ▶ Provide regular opportunities for your child to mix up with other his/her age fellows.
- ▶ Try to keep him/her temporarily separated from you, for example, leaving him/her with grand parents or friends while going on shopping.
- ▶ Encourage him/her to go and play with other children.
- ▶ Often visit the school along your child before the admission to make familiar with school.
- ▶ Talk about school positively.
- ▶ The more shy, clinging or dependent, your child is the more effort you should make to release him/her from dependence on you.
- ▶ Encourage your child to accept responsibility of looking after his/her toys etc.
- ▶ On doing a good job, give plenty of praise to him/her.
- ▶ As a family set some rules which you feel must be observed and try to make him/her to follow them.



BACK TO
SCHOOL





HELPING YOUR CHILD AT HOME

The Importance of Conversation:

Talk to your child as much as possible & listen to him/her what he/she wants to say. It will help your child to overcome pronouncing problem. Answer his/her questions simply, clearly, carefully & truthfully as possible.

The Influence of Television:

Try to think of every programme you watch together. Your child will benefit greatly if you discuss the programme and clarify confusions as and when they arise.



The Importance of Books:

A great selection of children's books is available in the market like cards book, clothes book, coloring book, counting book and pictures book etc. Young children should be encouraged to look at books, talk about them and be involved in their selection. Select always informative books for your child.

CO-CURRICULAR & EXTRA CURRICULAR

CHS believes that co-curricular & extracurricular activities are crucial for personal growth, providing students with a well-rounded education that prepares them for various challenges in life, both academically and socially.

Sports Fiesta

Sports Fiesta is a fun and lively event typically organized by CHS to promote physical activity, teamwork, and sportsmanship among students. It can involve a range of sports competitions, games, and activities, offering something for every student, whether they're a seasoned athlete or someone just looking to have fun.





CURRICULAR

Field Trips

CHS field trips complement classroom learning by offering diverse and interactive opportunities for students. They encourage curiosity, support academic & social development, and contribute to personal growth.



CURRICULA

A Celebration of Accomplishments

Class X is a significant milestone in a student's educational journey. The farewell provides an opportunity to celebrate the hard work, perseverance, and academic achievements that have come to fruition over the years. Whether it's completing exams, excelling in sports, or participating in extracurricular activities, the farewell event highlights these accomplishments.



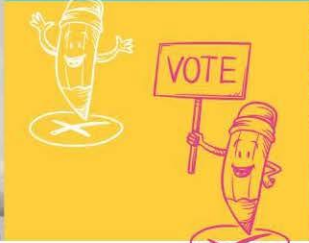
CURRICULA

Annual Prize Distribution

Annual Prize Distribution ceremony is a significant event in CHS; we celebrate the academic, extracurricular, and overall achievements of students by rewarding them for their hard work.



CURRICULAR



School Council Elections

School Council elections are an important process in CHS where students elect representatives to serve on the council. These councils help students have a voice in decisions about school policies, events, and other aspects of school life. Here is a glimpse of elected council members for this session.



CURRICULAR

Teachers Day

Teacher's Day is a special occasion dedicated to honor and celebrate the contributions of teachers and educators across CHS campuses. The day is observed in all the CHS schools to recognize the importance of teaching in society.



CURRICULAR

Children Day

CHS believes Children's Day is not just about fun and games; it's also about advocating for the rights of children, providing a voice for the challenges they face, and promoting their access to better education, health, and protection from abuse. It's a reminder that children are the future, and investing in their well-being is vital for building a better world.



CAMPUS FACILITIES

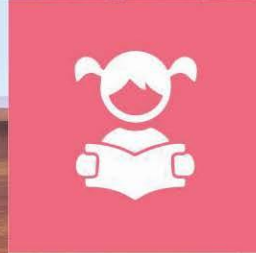
CHS is having well-designed school buildings in the heart of the city which provide a safe, comfortable, and stimulating environment for students and staff.



FACILITIES

Library

Library is a resource-rich space designed to support learning, foster a love of reading, and provide students with access to information, books, and various media. It serves as a place where students can conduct research, complete assignments, read for pleasure, and participate in activities or workshops that enhance their literacy and critical thinking skills.



FACILITIES

Computer Lab

Computer lab is a crucial resource for supporting digital education and helping students develop the skills they need for the modern world. They may also be used for specialized classes such as graphic design, robotics, or game development, depending on the school's curriculum.



FACILITIES

Science Lab

Science lab is a dedicated space designed for conducting experiments, demonstrations, and practical learning activities related to science subjects like biology, chemistry & physics. It is an essential part of hands-on learning, enabling students to apply theoretical knowledge to real world situations.



OUR ACHIEVEMENTS



FATIMA ASIF

Highest Achievement BISE 2024
1177 out of 1200



AYYAN ZAHRA AHMAD

Highest Achievement BISE 2023
1081 out of 1100



HAFIZ M. AHMAD

Highest Achievement BISE 2022
1087 out of 1100



RUMAISA AFTAB

Highest Achievement BISE 2021
1100 out of 1100



MUHAMMAD ARSHMAN

Highest Achievement BISE 2021
1100 out of 1100



MUHAMMAD TAHA

Highest Achievement BISE 2021
1100 out of 1100



MUHAMMAD AHMAD

Highest Achievement BISE 2021
1100 out of 1100

MATRIC RESULT 2025 IN BISE FAISALABAD



MEERAB FAISAL
1183 out of 1200



MAHEEN ZAHRA AHMAD
1177 out of 1200



MIRAM FATIMA
1166 out of 1200



NOOR FATIMA
1163 out of 1200



SAMIN FATIMA
1162 out of 1200



AYESHA IMRAN
1161 out of 1200



ZAINAB NOOR
1159 out of 1200



M. HABIB IMRAN
1155 out of 1200



KASHIFA AMIN
1153 out of 1200



AMNA ABID
1147 out of 1200



HANIA
1145 out of 1200



EMAN SHAMAS
1145 out of 1200

MATRIC RESULT 2025 IN BISE FAISALABAD



EMAN FATIMA
1143 out of 1200



ESHA ARSHAD
1143 out of 1200



SHIFA NAEEM
1142 out of 1200



ZAINAB IMRAN
1141 out of 1200



MISHRIHA QAMAR
1141 out of 1200



SYEDA AYEZA UMAIR
1139 out of 1200



ARSHIA FATIMA
1139 out of 1200



GHULAM GHOUS
1139 out of 1200



TAYYABA MUSHTAQ
1136 out of 1200



WARISHA FAISAL
1135 out of 1200



MAHNOOR
1135 out of 1200



ABDUL MATEEN SHAHID
1135 out of 1200

MATRIC RESULT 2025 IN BISE FAISALABAD



M. HASSAN
1135 out of 1200



MARIYAM NAEEM
1134 out of 1200



REHAN ARSHAD
1142 out of 1200



ZAINAB IMRAN
1141 out of 1200



M. AHSAN
1132 out of 1200



ASTHMA NASIR
1131 out of 1200



NOOR-E-HARRAM
1129 out of 1200



MEERAB AFTAB
1126 out of 1200



AIMA TARIQ
1125 out of 1200



HAMDA
1125 out of 1200



HAFSA MAJID
1125 out of 1200



M. REYAN RASOOL
1135 out of 1200

MATRIC RESULT 2025 IN BISE FAISALABAD



EMAN FATIMA
1124 out of 1200



MINAHIL SHAHID
1123 out of 1200



MAHEEN FATIMA
1122 out of 1200



MOUEEZ TAHIR
1120 out of 1200



ROHA NAVEED
1117 out of 1200



M. SAUD NASEER
1117 out of 1200



INSHAAL ZAFAR
1116 out of 1200



ZAINAB NOOR
1115 out of 1200



SUNAINA SIDDIQUE GORAYA
1114 out of 1200



HAREEM ABRAR
1114 out of 1200



ALIHA MUNAWAR
1112 out of 1200



M. SAAD
1135 out of 1200

MATRIC RESULT 2025 IN BISE FAISALABAD



MAHNOOR
1110 out of 1200



NOOR FATIMA
1109 out of 1200



M. UMAR SAQIB
1109 out of 1200



TASBEEHA WAHID
1106 out of 1200



ARMAN TAHIR
1106 out of 1200



M. HUSSAIN
1103 out of 1200



AREEJ TAUSEEF
1115 out of 1200



MEERAB
1100 out of 1200



NUKHBA TAHIR
1100 out of 1200



NOOR FATIMA
1100 out of 1200



City High School - Matric Result 2025 - BISE Faisalabad

Sr.	Roll #	Name	Marks	Grade	Sr.	Roll #	Name	Marks	Grade	Sr.	Roll #	Name	Marks	Grade
1	411391	MEERAB FAISAL	1183	A+	33	411374	AIMA TARIQ	1125	A+	65	411414	MARYAM SHAHID	1091	A+
2	411384	MAHEEN ZAHRA AHMAD	1177	A+	34	411408	HAMDA	1125	A+	66	411426	MAHNOOR	1091	A+
3	411497	MIRAM FATIMA	1166	A+	35	411527	HAFSA MAJID	1125	A+	67	411533	WARDA CHOUDHARY	1091	A+
4	411380	NOOR FATIMA	1163	A+	36	477742	MUHAMMAD REYAN RASOOL	1125	A+	68	411593	MAIZA REHMAN	1090	A+
5	411406	SAMIN FATIMA	1162	A+	37	411513	EMAN FATIMA	1124	A+	69	477593	MUHAMMAD ASJAL TAHIR	1090	A+
6	411398	AYESHA IMRAN	1161	A+	38	411439	MINAHIL SHAHID	1123	A+	70	411558	WARDA ALI	1089	A+
7	411381	ZAINAB NOOR	1159	A+	39	411491	MAHEEN FATIMA	1122	A+	71	477760	MUHAMMAD WALI IMRAN	1088	A+
8	477712	MUHAMMAD HABIB IMRAN	1155	A+	40	477666	MOUEEZ TAHIR	1120	A+	72	411458	TASKEEN FATIMA	1085	A+
9	411469	KASHIFA AMIN	1153	A+	41	411534	ROHA NAVEED	1117	A+	73	477734	M. JUNAID SHAHZAD	1085	A+
10	411375	AMNA ABID	1147	A+	42	477644	MUHAMMAD SAUD NASEER	1117	A+	74	411447	HIRA	1084	A+
11	411372	HANIA	1145	A+	43	411581	INSHAAL ZAFAR	1116	A+	75	411568	ESHAL FATIMA	1084	A+
12	411424	EMAN SHAMAS	1145	A+	44	411448	ZAINAB NOOR	1115	A+	76	477809	IMTANAN AHMED	1083	A+
13	411386	EMAN FATIMA	1143	A+	45	411388	SUNAINA SIDDIQUE GORAYA	1114	A+	77	411421	MUQADDAS ZAHEER	1082	A+
14	411560	ESHA ARSHAD	1143	A+	46	411561	HAREEM ABRAR	1114	A+	78	477706	MUHAMMAD MUSA ALI	1078	A+
15	411553	SHIFA NAEEM	1142	A+	47	411559	ALIHA MUNAWAR	1112	A+	79	411376	ZAINAB JAMIL	1072	A+
16	411420	ZAINAB IMRAN	1141	A+	48	477781	MUHAMMAD SAAD	1111	A+	80	411492	KIRAN FATIMA	1072	A+
17	411433	MISHRIHA QAMAR	1141	A+	49	411529	MAHNOOR	1110	A+	81	477763	MUHAMMAD SHAHJAHAN	1072	A+
18	411466	SYEDA AYEZA UMAIR	1139	A+	50	411562	NOOR FATIMA	1109	A+	82	477603	MUHAMMAD ARHAM	1070	A+
19	411505	ARSHIA FATIMA	1139	A+	51	477714	MUHAMMAD UMAR SAQIB	1109	A+	83	411493	HAJRA MAZHAR	1068	A+
20	477708	GHULAM GHOUS	1139	A+	52	411402	TASBEEHA WAHID	1106	A+	84	411385	ALVEENA	1066	A+
21	411378	TAYYABA MUSHTAQ	1136	A+	53	411564	ARMAN TAHIR	1106	A+	85	411478	AMNA SEEMAB MUSLIM	1066	A+
22	411394	WARISHA FAISAL	1135	A+	54	477588	MUHAMMAD HUSSNAIN	1103	A+	86	411485	NOOR UL HUDA	1065	A+
23	411487	MAHNOOR	1135	A+	55	411395	AREEJ TAUSEEF	1102	A+	87	477620	M. SHAHZAIB ADNAN	1064	A+
24	477590	ABDUL MATEEN SHAHID	1135	A+	56	411443	MEERAB	1100	A+	88	411392	AAMNA	1063	A+
25	477601	MUHAMMAD HASSAN	1135	A+	57	411499	NUKHBA TAHIR	1100	A+	89	411532	ZOMIA JABBAR	1062	A+
26	411405	MARRIYAM NAEEM	1134	A+	58	411516	NOOR FATIMA	1100	A+	90	411501	SAFFA MUSHTAQ	1060	A+
27	477735	REHAN ARSHAD	1134	A+	59	477725	MUHAMMAD WAHAB	1097	A+	91	411546	ATIKA REHMAN	1060	A+
28	411415	MAHEEN SHAHID	1133	A+	60	411382	AIEDA MARYAM	1096	A+	92	411555	SAMAWIA AZHAR	1059	A+
29	477729	MUHAMMAD AHSAN	1132	A+	61	411444	MAHEEN ALI	1096	A+	93	477776	M. TAHA BIN ASHFAQ	1058	A+
30	411451	ASMA NASIR	1131	A+	62	477730	ROHAAN ALI	1095	A+	94	477587	ALI HASSAN	1056	A+
31	411428	NOOR-E-HARRAM	1129	A+	63	477794	MUHAMMAD ZULKIFL HANIF	1095	A+	95	477764	ABDUL RAFAY AHMAD	1056	A+
32	411429	MEERAB AFTAB	1126	A+	64	411584	ABIHA RAZZAQ	1094	A+	96	411582	AREEBA	1055	A+

City High School - Matric Result 2025 - BISE Faisalabad

Sr.	Roll #	Name	Marks	Grade	Sr.	Roll #	Name	Marks	Grade	Sr.	Roll #	Name	Marks	Grade
97	477594	SHEHROZ ALI KHAN	1049	A+	129	477660	ABDUL REHMAN	1005	A+	161	411427	MINAHIL SHAHID	946	A
98	477779	ABDUL REHMAN	1049	A+	130	411404	MINAHIL KASHIF	1004	A+	162	477681	MUHAMMAD UMER	944	A
99	411412	SALWA NAZ	1047	A+	131	411531	KHADIJA RIAZ	1002	A+	163	411383	MISHAL MEHBOOB	943	A
100	411489	AZKA KASHIF	1047	A+	132	477688	MUHAMMAD MOHAD FAHEEM	1002	A+	164	477707	MUHAMMAD AHSAN	942	A
101	477628	MUHAMMAD ABDULLAH	1047	A+	133	411440	EMAAN SHAHZAD	1001	A+	165	411540	ZAINAB	941	A
102	477600	MUHAMMAD AHMED	1044	A+	134	411496	AMINA AFZAAL	995	A+	166	477611	MUHAMMAD HAMZA TAHIR	938	A
103	411504	EMAN FATIMA	1043	A+	135	477731	MUHAMMAD HUSNAIN AHSAN	995	A+	167	477604	MUHAMMAD AZAN MAJID	936	A
104	411583	AYESHA RAZZAQ	1041	A+	136	477771	MUHAMMAD HASHER	995	A+	168	411434	AMNA ALI	932	A
105	477702	HAMZA BASHIR	1041	A+	137	477769	MUHAMMAD ABU BAKAR	994	A+	169	411476	FATIMA ABBAS	932	A
106	411437	MALEEHA RIZWAN	1040	A+	138	411436	MEERAB HAROON	988	A+	170	411486	RAMEEN KHAN	930	A
107	411397	AYEMA NAVEED	1038	A+	139	411387	SARA JAVED	986	A+	171	411490	EMAN	929	A
108	411575	KHADIJA EJAZ	1037	A+	140	411544	MINAHIL MUJAHID	985	A+	172	411400	MAHREEN ALAM	928	A
109	477741	M. ABDULLAH MOAZIZ	1037	A+	141	411536	MAIRA	983	A+	173	411526	WAJEEHA NISAR	928	A
110	477650	SYED M. ABDUL RAFAY	1033	A+	142	411379	MANNAL MUNAWAR	977	A+	174	477638	MUHAMMAD HABIB QADEER	925	A
111	477719	MUHAMMAD BILAL SADIQ	1032	A+	143	411472	JAWERIA NAEEM	973	A+	175	477598	IBRAHIM KHALID	924	A
112	477728	MUHAMMAD AHMAD ROUF	1032	A+	144	411563	UMAMA QIRRAAT	973	A+	176	411442	HAJRA KASHIF	923	A
113	411396	SAMA ADIL	1031	A+	145	477643	MUHAMMAD ABDULLAH ASIF	970	A+	177	411591	KHADIJA WAHEED	923	A
114	411431	RAMISHA OMER	1028	A+	146	411430	IRAJ KHAWAR	969	A+	178	477745	SHAHZAIB NOMAN	922	A
115	411377	HUMNA IRFAN	1026	A+	147	411535	AYESHA NASEEM IFTIKHAR	969	A+	179	411574	FATIMA WAHEED	921	A
116	411554	TEHSEEN FATIMA	1025	A+	148	477704	HUSSAIN SHEHZAD	969	A+	180	411399	MOMINA FAISAL	919	A
117	477751	MUHAMMAD HUSSNAIN	1024	A+	149	411457	MISHAL NOOR	968	A+	181	411549	NOOR FATIMA SHABBIR	917	A
118	477800	M. ABDUL REHMAN AHMAD	1024	A+	150	477639	MUHAMMAD HASSAN	964	A+	182	411552	ALISHBA FAKHAR	917	A
119	477739	MUHAMMAD BILAL	1023	A+	151	477595	ABDUL MOUEED AHMED	958	A	183	411498	KASHAF-UL-HUDA	916	A
120	411514	ESHAL FATIMA	1019	A+	152	477738	MUHAMMAD EZZAN	957	A	184	411565	SHANZAY ZAINAB	916	A
121	477605	M. AWAIS WASEEM AWAN	1018	A+	153	477808	MUHAMMAD AHMAD	956	A	185	477669	MUHAMMAD KASHAN AHMAD	916	A
122	477703	M. ABAIDULLAH HASSAN	1018	A+	154	411416	AYESHA ANWAR	955	A	186	477637	KHAN MUHAMMAD	914	A
123	411393	MAHROSH USMAN	1016	A+	155	411464	SHEZAL FATIMA	951	A	187	411547	IMAMMA SHAHZAD	910	A
124	477667	MUHAMMAD ABDULLAH	1015	A+	156	411463	FATIMA KAMAL	950	A	188	411572	FAJAR ATIF	910	A
125	411462	SAMAN RAI	1013	A+	157	411587	IMSAL SHAKEEL	950	A	189	411460	HIBA	909	A
126	411445	WANIA ALI	1011	A+	158	411410	MARYAM ASIF	949	A	190	411435	NAFEESA BEGUM	908	A
127	411573	FATIMA TARIQ	1009	A+	159	411477	MEERAB JAMIL	948	A	191	411407	HUMNA NABEEL	906	A
128	477788	ABDUL MUHAIMIN	1006	A+	160	477629	AAYAN ALI	947	A	192	477715	MUHAMMAD HANZLA	904	A

MATRIC RESULT 2024 IN BISE FAISALABAD



FATIMA ASIF
1177 out of 1200



M. ASAD RAZA
1169 out of 1200



M. AYYAN ABDULLAH
1169 out of 1200



M. ABDULLAH
1164 out of 1200



NOOR FATIMA
1161 out of 1200



MUZAMMIL HUSSAIN
1159 out of 1200



M. HARIS EJAZ
1157 out of 1200



GULL-E-ZAHRA
1153 out of 1200



HIZA JAVED
1152 out of 1200



M. SAADULLAH SHAH
1149 out of 1200



USHNA TARIQ
1147 out of 1200



MOEED AHMAD
1146 out of 1200

MATRIC RESULT 2024 IN BISE FAISALABAD



M. HUZAIFA HAFEEZ
1146 out of 1200



MOMINA
1145 out of 1200



ILMA
1144 out of 1200



BUSHRA RIAZ
1143 out of 1200



MUEEZ UL HAQ KHAN
1141 out of 1200



UMM-E-RUBAB
1140 out of 1200



AYMAN AZHAR
1139 out of 1200



SYEDA FARIAH BATOOL
1137 out of 1200



ABDULLAH M. KHAN
1136 out of 1200



HAMZA AMIR
1136 out of 1200



HAFSA BATOOL
1135 out of 1200



HOOR UL AIN FATIMA
1134 out of 1200

MATRIC RESULT 2024 IN BISE FAISALABAD



M. HUZAIFA
1132 out of 1200



ESHMAL JAVED
1131 out of 1200



M. AHMAD MEHMOOD
1131 out of 1200



YASHFA NOMAN
1130 out of 1200



M. AHMAD UMAR
1129 out of 1200



AMMAR ABDULLAH
1128 out of 1200



ZAINAB BATOOL
1126 out of 1200



HARAM ATTA
1125 out of 1200



RAVEEN ZAINAB
1125 out of 1200



MEERAB RIZWAN
1124 out of 1200



MINAHIL MURAD
1123 out of 1200



M. UZAIR
1122 out of 1200

MATRIC RESULT 2024 IN BISE FAISALABAD



NOOR NAVEED
1121 out of 1200



MAHNOOR
1119 out of 1200



MUHAMMAD AHMAD
1118 out of 1200



M. AITZAZ
1117 out of 1200



ISHMAL FATIMA
1116 out of 1200



M. WASIR AMIR
1116 out of 1200



ANEEQA SHAH
1114 out of 1200



ASADULLAH
1113 out of 1200



AIMEN
1112 out of 1200



M. SULEMAN AWAN
1112 out of 1200



ABDUL RAFAY
1112 out of 1200



FIZA ASIF
1110 out of 1200

MATRIC RESULT 2024 IN BISE FAISALABAD



MINAL IQBAL
1109 out of 1200



SYEDA USWA AHMAD
1107 out of 1200



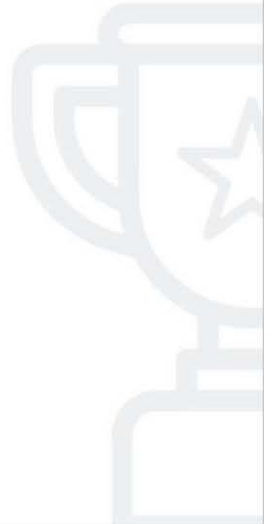
AZMATULLAH
1107 out of 1200



WISHMA SHAHZAD
1106 out of 1200



MUHAMMAD SHAHROZ
1104 out of 1200



City High School - Matric Result 2024 - BISE Faisalabad

Sr.	Roll #	Name	Marks	Grade	Sr.	Roll #	Name	Marks	Grade	Sr.	Roll #	Name	Marks	Grade
1	413398	FATIMA ASIF	1177	A+	33	413364	RAVEEN ZAINAB	1125	A+	65	413367	FIZA KHAN	1083	A+
2	483005	MUHAMMAD ASAD RAZA	1169	A+	34	413336	MEERAB RIZWAN	1124	A+	66	483015	UMER-BIN-HASSAN	1083	A+
3	483008	MUHAMMAD AYYAN ABDULLAH	1169	A+	35	413421	MINAHIL MURAD	1123	A+	67	483017	MUHAMMAD MOEED	1082	A+
4	483146	MUHAMMAD ABDULLAH	1164	A+	36	483157	MUHAMMAD UZAIR	1122	A+	68	413362	FATIMA IMRAN	1080	A+
5	413366	NOOR FATIMA	1161	A+	37	413474	NOOR NAVEED	1121	A+	69	413539	FATIMA NOOR	1080	A+
6	483037	MUZAMMIL HUSSAIN	1159	A+	38	413537	MAHNOOR	1119	A+	70	413402	AAMINA SHAKEEL	1077	A+
7	483019	MUHAMMAD HARIS EJAZ	1157	A+	39	483034	MUHAMMAD AHMAD	1118	A+	71	413416	IFRA UMAR	1076	A+
8	413442	GULL-E-ZAHRA	1153	A+	40	483168	MUHAMMAD AITZAZ	1117	A+	72	413464	AMNA MUNIR	1075	A+
9	413527	HIZA JAVED	1152	A+	41	413468	ISHMAL FATIMA	1116	A+	73	413470	AMNA AMAN	1075	A+
10	483130	MUHAMMAD SAADULLAH SHAH	1149	A+	42	483145	MUHAMMAD WASI AMIR	1116	A+	74	483029	MUHAMMAD TAYYAB	1074	A+
11	413477	USHNA TARIQ	1147	A+	43	413333	ANEEQA SHAH	1114	A+	75	413444	MUNEEBA SAQIB	1073	A+
12	483054	MOEED AHMAD	1146	A+	44	483042	ASADULLAH	1113	A+	76	483050	ABDUL MOIZ	1070	A+
13	483149	MUHAMMAD HUZAIFA HAFEEZ	1146	A+	45	413441	AIMEN	1112	A+	77	413533	MEERAB	1068	A+
14	413337	MOMINA	1145	A+	46	483071	MUHAMMAD SULEMAN AWAN	1112	A+	78	413480	AMNA BATOOL	1067	A+
15	413503	ILMA	1144	A+	47	483178	ABDUL RAFAY	1112	A+	79	413476	ISMA	1066	A+
16	413356	BUSHRA RIAZ	1143	A+	48	413472	FIZA ASIF	1110	A+	80	413351	AYESHA FATIMA	1064	A+
17	483148	MUEEZ UL HAQ KHAN	1141	A+	49	413425	MINAL IQBAL	1109	A+	81	483174	MUHAMMAD AHMED HASSAN	1064	A+
18	413400	UMM-E-RUBAB	1140	A+	50	413399	SYEDA USWA AHMAD	1107	A+	82	483016	MUHAMMAD SOBAN AHMED	1062	A+
19	413426	AYMAN AZHAR	1139	A+	51	483035	AZMATULLAH	1107	A+	83	483122	MUHAMMAD HASAAN ABID	1062	A+
20	413354	SYEDA FARIAH BATOOL	1137	A+	52	413357	WISHMA SHAHZAD	1106	A+	84	413492	RABIA IFTIKHAR	1058	A+
21	483020	RANA ABDULLAH MUHAMMAD KHAN	1136	A+	53	483072	MUHAMMAD SHAHROZ	1104	A+	85	483053	ABDUL SAMMAD	1058	A+
22	483129	HAMZA AMIR	1136	A+	54	413369	SWAIBA YOUSAF	1095	A+	86	483197	MUHAMMAD SAIM	1058	A+
23	413345	HAFSA BATOOL	1135	A+	55	413519	ALEENA KASHIF	1094	A+	87	413440	LARAYEB SAEED	1057	A+
24	413380	HOOR UL AIN FATIMA	1134	A+	56	413372	ZAINAB FIAZ	1092	A+	88	413514	KASHAF SUFYAN	1057	A+
25	483078	MUHAMMAD HUZAIFA	1132	A+	57	413491	HAJRA MAHMOOD	1091	A+	89	413385	NABA NOOR	1056	A+
26	413497	ESHMAL JAVED	1131	A+	58	413451	KHADIJA MAHMOOD PARACHA	1090	A+	90	413412	HURMAT-UN-NISA	1056	A+
27	483156	MUHAMMAD AHMAD MEHMOOD	1131	A+	59	483134	MUHAMMAD AHMAD	1089	A+	91	483128	MUHAMMAD ABDUL QADIR	1056	A+
28	413405	YASHFA NOMAN	1130	A+	60	483187	MUHAMMAD TALAL	1087	A+	92	413331	HOORIA AWAN	1055	A+
29	483201	MUHAMMAD AHMAD UMAR	1129	A+	61	413465	AYESHA MUNIR	1086	A+	93	413415	AREEBA ANJUM	1055	A+
30	483200	AMMAR ABDULLAH	1128	A+	62	483058	SAMIULLAH	1086	A+	94	483199	MUHAMMAD HASEEB KHALID	1055	A+
31	413439	ZAINAB BATOOL	1126	A+	63	483076	SHAHZAIB QASIM	1084	A+	95	483184	MUHAMMAD AHSAN	1054	A+
32	413338	HARAM ATTA	1125	A+	64	483204	MUHAMMAD IBRAHIM	1084	A+	96	483105	MUHAMMAD REHAN ATIF	1051	A+

City High School - Matric Result 2024 - BISE Faisalabad

Sr.	Roll #	Name	Marks	Grade	Sr.	Roll #	Name	Marks	Grade	Sr.	Roll #	Name	Marks	Grade
97	413431	IMAMA BATOOL	1050	A+	129	413427	AMNA ASHRAF	1013	A+	161	413495	ZARISH FATIMA	981	A+
98	413443	ADEEN GULL	1050	A+	130	413358	MEERUB KHUDADAD	1012	A+	162	483141	AFFAN UR REHMAN	981	A+
99	413409	ZAINAB ASIF	1049	A+	131	483068	UMER ADNAN	1012	A+	163	483059	ARHAM KHALIL	980	A+
100	483043	MUHAMMAD BASIT MUBEEN	1048	A+	132	483014	ABDUL MOIZ	1010	A+	164	483027	MUHAMMAD ZAID ASIF	977	A+
101	483044	MUHAMMAD ABU BAKAR BIN SOHAIL	1046	A+	133	413437	HEEBBA NOOR	1009	A+	165	483117	MUHAMMAD SUFIYAN JAVAID	977	A+
102	483055	ABDUL RAFFAY ARSHAD	1046	A+	134	413487	MINHA AHMAR	1008	A+	166	413538	HAFIZA MUBASHRA AMIN	976	A+
103	413389	MARRIAM NAVEED	1045	A+	135	483137	MUHAMMAD AHTESHAM	1008	A+	167	413467	BISMAH ZAHID	974	A+
104	483155	MUHAMMAD REHAN	1043	A+	136	483060	MUHAMMAD IMAM	1006	A+	168	413436	AMNA AZEEM	973	A+
105	413424	IMAMA NAEEM	1042	A+	137	483080	AHSAN AHMAD	1006	A+	169	483052	ABDUL AHAD	973	A+
106	483116	MUHAMMAD TAHA BILAL	1040	A+	138	413429	FAIZA ZAKA	1005	A+	170	413414	ZOHA	971	A+
107	413395	AREESHA ARSHAD	1039	A+	139	483224	AHMAD RAZZAQ	1005	A+	171	483195	FAHAD ALI	970	A+
108	413532	RIDA FATIMA	1039	A+	140	413406	ZAINAB QAISER	1004	A+	172	413332	MALAIKA	968	A+
109	413386	FARWA MUNIR	1038	A+	141	483040	MUHAMMAD FAIZAN JAVED	1004	A+	173	483070	MUHAMMAD DAWOOD	967	A+
110	483023	MUHAMMAD IBRAHIM KHALID	1038	A+	142	483049	TALAL AHMAD	1002	A+	174	483047	HASSAN AFZAAL	966	A+
111	413505	AMINA TAYYAB	1036	A+	143	413461	FAREEHA BATOOL	1001	A+	175	413341	HARAM BASHIR	964	A+
112	413352	EMAN FATIMA	1034	A+	144	483162	MUHAMMAD AMMAR	1001	A+	176	413526	TOOBA ALI	963	A+
113	413359	EMAAN FATIMA	1032	A+	145	483032	MUHAMMAD ADNAN	999	A+	177	483169	MUHAMMAD HAMID	962	A+
114	413459	UMM-E-ROOMAN	1032	A+	146	483103	ABU BAKAR BIN KHAWAR	998	A+	178	483150	ABEER IRFAN	961	A+
115	413340	ANAYAH NADEEM	1031	A+	147	483064	MUHAMMAD SHAHRAM ARIF	996	A+	179	413454	DUA FAISAL	957	A
116	413407	ARFA ATIF	1031	A+	148	483215	MUHAMMAD ABU BAKAR	996	A+	180	413348	HADIA ABDULLAH	956	A
117	483022	MUHAMMAD SALMAN	1028	A+	149	413411	HAFSA HASSAN	994	A+	181	483010	MUHAMMAD ALI TARIQ	956	A
118	413438	ZERMEEN DAWOOD PARACHA	1026	A+	150	413478	ZISHA NAYYAB	994	A+	182	483138	ABDUL HADI	950	A
119	483084	MUHAMMAD AHSAN FAROOQ	1025	A+	151	483066	MUHAMMAD AHMAD FAZAL SUBHAN	994	A+	183	413410	WAREESHA	947	A
120	483135	SYED MUHAMMAD SAIM HUSSAIN	1025	A+	152	413370	ABEEHA SHERAZ	993	A+	184	483081	MUHAMMAD ALIYAN ZAFAR	945	A
121	483202	MUHAMMAD USMAN	1023	A+	153	413404	LOEEZA BATOOL	993	A+	185	413361	KASHAF YASMEEN	944	A
122	413531	LAIBA BUTT	1022	A+	154	413435	ZAINAB ALI	991	A+	186	413394	EMAN NOOR	940	A
123	483211	MUHAMMAD ABU BAKAR TAHIR	1022	A+	155	483012	MUHAMMAD HAMDAN	990	A+	187	413408	EMAN FATIMA	940	A
124	483039	MUHAMMAD ZUNURAIN	1018	A+	156	413515	KHADIJA	989	A+	188	483132	MUHAMMAD ABDULLAH	940	A
125	483144	MUHAMMAD TAYYAB	1018	A+	157	483033	MUHAMMAD HAMID NOOR	987	A+	189	483158	ALI HASSAN	940	A
126	483024	MUHAMMAD USMAN MOUZZAM	1017	A+	158	483177	ABDULLAH ASIF	987	A+	190	483082	HUSSAIN ALI	939	A
127	413346	EMAN KHURRAM	1016	A+	159	413469	AMINA AZHAR	985	A+	191	413342	AMNA RUMAN	937	A
128	413493	SEHRISH	1016	A+	160	413374	MARYAM	982	A+	192	483101	MUHAMMAD FURQAN	937	A

City High School - Matric Result 2024 - BISE Faisalabad

Sr.	Roll #	Name	Marks	Grade	Sr.	Roll #	Name	Marks	Grade	Sr.	Roll #	Name	Marks	Grade
193	413382	AMAN ASHRAF	935	A	225	413430	BISMA	894	A	257	413520	ANIZA	850	A
194	413360	EMAAN SALEEM	934	A	226	413540	QANITA BATOOL	893	A	258	483140	MOHID AHMAD	850	A
195	483062	MUHAMMAD AHMAD SAJJAD	933	A	227	483063	RAYAN ASAD	893	A	259	483007	SAMRAN KHALID	843	A
196	483151	MUHAMMAD ABDULLAH	932	A	228	483113	ABDUL HADI BAJWA	893	A					
197	483147	MUHAMMAD SUBHAN KASHIF	931	A	229	413344	NOOR FATIMA	891	A					
198	483041	MUHAMMAD ABDULLAH	930	A	230	413460	WANIA SARWAR	890	A					
199	413349	AZKA NAZLI	927	A	231	413484	AISHA NOOR	890	A					
200	413368	LAIBA NOOR	927	A	232	483097	HAFIZ MUHAMMAD ALEEM ARIF	890	A					
201	413420	ZOHA SAFDAR	924	A	233	413473	ZAINAB AKRAM	889	A					
202	413387	AINA AHMED	922	A	234	483176	MUHAMMAD HASEEB NAQEEBI	889	A					
203	483077	SAMEER AZHAR	920	A	235	413388	ABEERA ASAD	887	A					
204	483163	MUHAMMAD SAIM	920	A	236	483051	SYED MURTAZA TANVEER	886	A					
205	413413	FARWA	919	A	237	483089	AHMAD NAWAZ BAIG	883	A					
206	413347	MUNEEBA ANWAR	917	A	238	413401	RISAAL NAVEED	882	A					
207	413506	UMM-E-HALEEMA	915	A	239	413544	ALIZA	882	A					
208	413521	AREESHA FATIMA	915	A	240	413535	MAHAM SHAHID	881	A					
209	413452	MAHA ATTIQUE	911	A	241	483212	MUHAMMAD ABDULLAH	879	A					
210	413541	MAHNOOR	909	A	242	413516	MINAHIL	878	A					
211	483009	MUHAMMAD FAIZAN JAFAR	908	A	243	483030	MUHAMMAD WASSAM	871	A					
212	413376	SAIRA	907	A	244	483091	MUHAMMAD MAMOON	866	A					
213	483094	ABDUL REHMAN YASIR	907	A	245	413403	ALEENA AASHED	864	A					
214	483159	HAMZA ILYAS	907	A	246	413502	ALISHBA KAMRAN	864	A					
215	413447	DUA ABID	906	A	247	483133	MUHAMMAD ROHAN	864	A					
216	413494	SHIZA	906	A	248	483161	ABDUL-REHMAN	864	A					
217	483119	MUHAMMAD SULEMAN KHALID	905	A	249	483225	MUHAMMAD HOORAIN	864	A					
218	413428	ARWA ABRAR	904	A	250	483111	AHMED SULTAN KHAN	862	A					
219	413525	MARYAM ABID	904	A	251	413479	SARA IMRAN	861	A					
220	483031	MUHAMMAD SOHAIB AKRAM	903	A	252	413542	NOOR FATIMA	861	A					
221	413518	MAHJABEEN SEHAR	902	A	253	413471	MAWWADDAT KHADIJA	856	A					
222	413483	MAHEEN HANIA	898	A	254	413488	HADIA AKRAM	854	A					
223	413375	MINAHIL ASHRAF	896	A	255	483219	MUHAMMAD USMAN AHSAN	853	A					
224	483087	MUHAMMAD ALI NAIK	895	A	256	413350	MINAHIL MAQSOOD	850	A					

MATRIC RESULT 2023 IN BISE FAISALABAD



AYYAN ZAHRA AHMAD
1081 out of 1100



RITAJ MUJAHID
1080 out of 1100



FAJAR ASIF
1076 out of 1100



KHADIJA NOOR
1076 out of 1100



MAHNOOR FATIMA
1076 out of 1100



FASEEHA SHAHID
1074 out of 1100



MUHAMMAD INSHAL
1074 out of 1100



RAMLA YOUSAF
1072 out of 1100



RAMISHA ATIF
1070 out of 1100



M. HAMZA KHALID
1070 out of 1100



MISBAH KIRAN
1068 out of 1100



ZUNAIRA ASIM
1068 out of 1100

MATRIC RESULT 2023 IN BISE FAISALABAD



MUHAMMAD WALEED
1068 out of 1100



M. RIYAN KHALID
1065 out of 1100



NOOR-UL-AIN
1062 out of 1100



AYESHA SHABBIR
1061 out of 1100



MUHAMMAD MUAZIN
1056 out of 1100



FAIQA SHAFQAT
1055 out of 1100



MADINA
1054 out of 1100



AYESHA MUHAMMAD
1053 out of 1100



ZAMAMA CHATTHA
1053 out of 1100



ANUSHA ALI
1052 out of 1100



M. BILAL ZAHID
1052 out of 1100



MARYAM GHAFFAR
1047 out of 1100

MATRIC RESULT 2023 IN BISE FAISALABAD



AMNA TARIQ
1047 out of 1100



RAMEEN AMIR
1046 out of 1100



MANAL TAHIR
1046 out of 1100



ALI ABDULLAH
1045 out of 1100



RANIA USMAN
1041 out of 1100



ABDUL WAHAB
1041 out of 1100



MARYAM KASHIF
1035 out of 1100



M. HAFFI IHSAN
1035 out of 1100



M. HUZAIFA SHAHID
1032 out of 1100



M. ABDULLAH BILAL
1032 out of 1100



HADIA RASHID
1031 out of 1100



M. MOHTASHIM KHAN
1029 out of 1100

MATRIC RESULT 2023 IN BISE FAISALABAD



IFRA CHAUDHARY
1024 out of 1100



AYESHA AFZAAL
1023 out of 1100



FIZZA IFTIKHAR
1023 out of 1100



ABEERA ADEEL
1019 out of 1100



ANAYA FARHAD
1019 out of 1100



JAWERIA ANWAR
1017 out of 1100



MUHAMMAD UZAIR
1017 out of 1100



AYESHA AFZAAL
1016 out of 1100



FATIMA NAEEM
1012 out of 1100



M. AJMAL AYUB
1010 out of 1100



HALEEMA EMAN
1009 out of 1100



MUHAMMAD HADI
1008 out of 1100

MATRIC RESULT 2023 IN BISE FAISALABAD



RAI HASEEB HASSAN
1006 out of 1100



EMAAN MEHFOOZ KHAN
1004 out of 1100



M. ABUBAKAR
1003 out of 1100



MUSAB SHAHID
1002 out of 1100



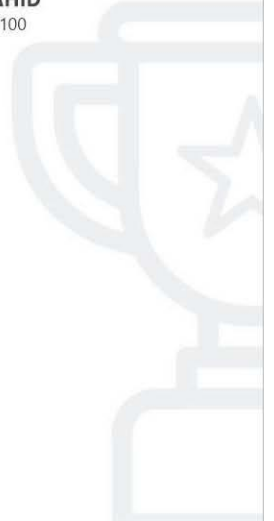
SIMRA KASHIF
1001 out of 1100



AYESHA QURRAT
1001 out of 1100



HAFSAH RAHMAN
1000 out of 1100



City High School - Matric Result 2023 - BISE Faisalabad

Sr.	Roll #	Name	Marks	Grade	Sr.	Roll #	Name	Marks	Grade	Sr.	Roll #	Name	Marks	Grade
1	412762	AYYAN ZAHRA AHMAD	1081	A+	33	476346	MUHAMMAD HUZAIFA SHAHID	1032	A+	65	412779	IMAMA SHAHBAZ	992	A+
2	412753	RITAJ MUJAHID	1080	A+	34	476500	MUHAMMAD ABDULLAH BILAL	1032	A+	66	476414	MUHAMMAD ADIL	992	A+
3	412765	FAJAR ASIF	1076	A+	35	412814	HADIA RASHID	1031	A+	67	412822	ZOB SHAHZAD	991	A+
4	412766	KHADIJA NOOR	1076	A+	36	476430	MUHAMMAD MOHTASHIM KHAN	1029	A+	68	412838	NOOR FATIMA	991	A+
5	412837	MAHNOOR FATIMA	1076	A+	37	412777	IFRA CHAUDHARY	1024	A+	69	412823	LAIBA	990	A+
6	412789	FASEEHA SHAHID	1074	A+	38	412845	AYESHA AFZAAL	1023	A+	70	412847	TAYYIBA MURTAZA	988	A+
7	476433	MUHAMMAD INSHAL	1074	A+	39	412858	FIZZA IFTIKHAR	1023	A+	71	412878	HADIA SULTAN	988	A+
8	412805	RAMLA YOUSAF	1072	A+	40	412790	ABEERA ADEEL	1019	A+	72	412801	HADIQA TAHIR	987	A+
9	412788	RAMISHA ATIF	1070	A+	41	412865	ANAYA FARHAD	1019	A+	73	412861	MINAHIL	986	A+
10	476463	MUHAMMAD HAMZA KHALID	1070	A+	42	412758	JAWERIA ANWAR	1017	A+	74	412775	SUFFA-TUL-MUNTAHA	984	A+
11	412768	MISBAH KIRAN	1068	A+	43	476338	MUHAMMAD UZAIR	1017	A+	75	412859	ZOHA MUSHTAQ	983	A+
12	412885	ZUNAIRA ASIM	1068	A+	44	412874	AYESHA AFZAAL	1016	A+	76	412879	AMNA ASHRAF	983	A+
13	476347	MUHAMMAD WALEED	1068	A+	45	412793	FATIMA NAEEM	1012	A+	77	412842	AYESHA QAISAR	981	A+
14	476340	MUHAMMAD RIYAN KHALID	1065	A+	46	476353	MUHAMMAD AJMAL AYUB	1010	A+	78	476355	MUHAMMAD FAKHAR SAFDAR	976	A+
15	412796	NOOR-UL-AIN	1062	A+	47	412821	HALEEMA EMAN	1009	A+	79	412795	HAMNA KASHIF	975	A+
16	412843	AYESHA SHABBIR	1061	A+	48	476330	MUHAMMAD HADI	1008	A+	80	476408	MUHAMMAD JAMAL NASIR	975	A+
17	476370	MUHAMMAD MUAZIN	1056	A+	49	476345	RAI HASEEB HASSAN	1006	A+	81	476445	ALI HASSAN	975	A+
18	412830	FAIQA SHAFQAT	1055	A+	50	412772	EMAAN MEHFOOZ KHAN	1004	A+	82	412869	SUNAILA TARIQ	972	A+
19	412840	MADINA	1054	A+	51	476413	MUHAMMAD ABUBAKAR	1003	A+	83	476407	ABDUL WAHAB TALHA	970	A+
20	412844	AYESHA MUHAMMAD	1053	A+	52	476393	MUSAB SHAHID	1002	A+	84	412757	WANIA AFZAL	968	A+
21	412852	ZAMAMA CHATTHA	1053	A+	53	412833	SIMRA KASHIF	1001	A+	85	412794	HIBA SHAHID	966	A+
22	412819	ANUSHA ALI	1052	A+	54	412883	AYESHA QURRAT	1001	A+	86	412841	MEERAB SHAHZAD	966	A+
23	476337	MUHAMMAD BILAL ZAHID	1052	A+	55	412846	HAFSAH RAHMAN	1000	A+	87	476501	MUHAMMAD HASSAN ALI	966	A+
24	412781	MARYAM GHAFFAR	1047	A+	56	476350	RANA MUHAUDIN	999	A+	88	476473	QUMBER ALI	964	A+
25	412866	AMNA TARIQ	1047	A+	57	412903	AYESHA IFTIKHAR	998	A+	89	412769	ABEEDA ANJUM	962	A+
26	412831	RAMEEN AMIR	1046	A+	58	476365	SAMEER-UR-REHMAN	998	A+	90	412889	HOORAIN	960	A+
27	412849	MANAL TAHIR	1046	A+	59	412857	MEERUB USMAN	997	A+	91	412921	AIMAN FATIMA	958	A+
28	476417	ALI ABDULLAH	1045	A+	60	412888	UROOJ FATIMA	997	A+	92	476361	MUHAMMAD MEER HAIDER	958	A+
29	412820	RANIA USMAN	1041	A+	61	412756	OMAMA ALI	996	A+	93	412799	MAIRA SHAHJAHAN	956	A+
30	476375	ABDUL-WAHAB	1041	A+	62	412764	MANAHIL WAQAR	994	A+	94	412807	NABIHA SHAFIQ	956	A+
31	412783	MARYAM KASHIF	1035	A+	63	476327	MUHAMMAD SHAZIL QAMAR	993	A+	95	412817	TAHREEM LIAQAT	950	A+
32	476348	MUHAMMAD HAFFI IHSAN	1035	A+	64	476372	SYED MUHAMMAD ABDULLAH	993	A+	96	412763	MARYAM SHAHID	949	A+

City High School - Matric Result 2023 - BISE Faisalabad

Sr.	Roll #	Name	Marks	Grade	Sr.	Roll #	Name	Marks	Grade	Sr.	Roll #	Name	Marks	Grade
97	412809	RAMEEN ASAM	948	A+	129	476383	KHIZAR AZAM	903	A+	161	476376	HASSAAN SHAHID	876	A
98	476344	MUHAMMAD USMAN ALI	947	A+	130	412811	RABIA ZAHID	902	A+	162	476425	MUHAMMAD ABDULLAH	876	A
99	476358	MUHAMMAD SAQIB BHATTI	946	A+	131	412754	BUSHRA TARIQ	901	A+	163	476428	MUHAMMAD SAIM	872	A
100	412813	SYEDA FATIMA ZAHARA NAQVI	945	A+	132	412784	SYEDA ZAINAB	901	A+	164	412791	ISHAL ARSHAD	869	A
101	412755	MUNEEBA ASIF	942	A+	133	412877	AIMAN IMRAN	901	A+	165	476405	M. HASHIR HUSSAIN BAIG	868	A
102	412871	NOOR FATIMA	942	A+	134	412872	SHIZA HASSAN	900	A+	166	476369	MUHAMMAD MUAZZAM ALI	867	A
103	412787	WAFI ZAHRA	939	A+	135	412810	EMAN SAJJAD	899	A+	167	412767	ARHAM NAVEED	865	A
104	412782	AYESHA AYUB	938	A+	136	476378	HAMZA AKHTAR	899	A+	168	412884	EYMAN ALVI	862	A
105	412853	WARDA NADEEM	938	A+	137	476443	ZAIN ALI	897	A+	169	412812	HABIBA NAJAM	860	A
106	476447	M. BILAL MUSTAFA	935	A+	138	412848	NOOR FATIMA	895	A+	170	476341	MATTI-UR-RAHMAN	857	A
107	412835	KIRAN NAEEM	934	A+	139	412818	SEHAR IRFAN	894	A+	171	476357	ABDUL MUQEET	857	A
108	412774	JAVERIA	930	A+	140	476459	M. ABUBAKAR SIDDIQUE	892	A+	172	476423	MUHAMMAD AHMAD BILAL	857	A
109	412798	AYESHA NADEEM	929	A+	141	412867	ZIRWA	891	A+	173	412891	FIZZA FATIMA	856	A
110	476371	HUZAIFA ABRAR	929	A+	142	412778	MAHA SHAKEEL	889	A+	174	412759	HADIA AISHA	855	A
111	476385	MUHAMMAD HAROON	925	A+	143	476334	M. SULEMAN SHAHZAD	888	A+	175	476422	MUHAMMAD BILAL	854	A
112	476436	MUHAMMAD SAVAIZ LIAQAT	925	A+	144	476359	MUHAMMAD AHMAD	888	A+	176	412815	FATIMA MUZAFFAR	853	A
113	476415	MUHAMMAD IBRAHIM	924	A+	145	476472	MUHAMMAD KHUBAIB	886	A+	177	412806	NOOR HAIDER	851	A
114	476514	MUHAMMAD MOHSIN	923	A+	146	476349	ABDUL REHMAN TAHIR	885	A+	178	476377	M. MAOUZ BIN NADEEM	851	A
115	412836	MUQADAS ZAHRA	921	A+	147	476356	SHAHBAZ AHMED BUTT	885	A+	179	412776	SUBAYYAL SAAD	849	A
116	476374	MUHAMMAD SHAHMEER	921	A+	148	412802	KASHAF JAVED	884	A+	180	412808	RIDA FATIMA	849	A
117	412864	MOAZZAMA MASOOD	919	A+	149	412855	HASNA MASOOM	884	A+	181	476403	M. MUJTABA HASSAN	848	A
118	476339	ABDUL HADI	916	A+	150	476354	MUHAMMAD HASHIM	883	A+	182	412828	JANNAT NASEEM TAHIR	846	A
119	412826	HAREEM AZHAR	915	A+	151	476390	SYED M. AUN ABBAS	883	A+	183	476420	M. SHAHEER HUSSAIN	845	A
120	476332	M. HASSAAN NAWAZ	915	A+	152	476439	MUHAMMAD FAHAD RAEES	881	A+	184	476474	MUHAMMAD ASAD	844	A
121	476471	AHMAD ALI	915	A+	153	476452	GHULAM SHABBIR AHMAD	881	A+	185	476402	MUHAMMAD ARHAM	841	A
122	412829	AISHA YASIN	914	A+	154	476461	MIAN ARBAB AHSAN	881	A+	186	476456	UBAID UR REHMAN	839	A
123	412839	FARDA FATIMA	911	A+	155	412890	NAFEESA NOOR	880	A	187	476455	MUHAMMAD ASAD	837	A
124	476427	MUHAMMAD HAMZA	911	A+	156	476469	MUSSAB AAMIR	880	A	188	412792	MINAHIL ABID	835	A
125	412800	MAHNOOR ZAHEER	910	A+	157	412887	AMNA ADNAN	879	A	189	412827	AQSA SHARIF	834	A
126	412882	ADAN AMINA	908	A+	158	412834	NAGEEN FATIMAH	878	A	190	476335	ALI IMRAN	834	A
127	476336	HAMZA LODHI	905	A+	159	476504	ZAIN UL ABIDIN	877	A	191	476503	HAARIS FAROOQ	833	A
128	476391	EBAD ALI	904	A+	160	412752	FIZA ABBAS	876	A	192	476482	MUHAMMAD AMMAR	831	A

City High School - Matric Result 2023 - BISE Faisalabad

Sr.	Roll #	Name	Marks	Grade	Sr.	Roll #	Name	Marks	Grade	Sr.	Roll #	Name	Marks	Grade
193	476441	M. SHAFFAN MASUD	826	A	206	412770	DUA FATIMA	808	A	219	476499	ABDUL RAFAY	794	A
194	412786	HAMDIA MUBASHAR KHAN	825	A	207	476360	M. ASADULLAH IMRAN	808	A	220	476331	ABDUL-REHMAN BUTT	792	A
195	412886	NOOR FATIMA	825	A	208	476368	RAYYAN AHSAN	807	A	221	476462	MUHAMMAD AHMAD RAZA	792	A
196	476416	HAMZA RAHEEL	825	A	209	476484	AZAN FARRUKH SALEEMI	807	A	222	476328	ABDUL MUJEEB	790	A
197	412771	HAFSA HASHMI	822	A	210	476392	MUHAMMAD JAWAD AMIN	805	A	223	476453	MUHAMMAD SHAHEER	788	A
198	412870	MUNEEBA MURIUM	821	A	211	476404	MUHAMMAD MOOSA NAVEED	805	A	224	476432	MIRSAD UL HASSAN	787	A
199	476470	REYAN AHMED	821	A	212	476434	MUHAMMAD HARIS	803	A	225	476475	MUHAMMAD MUJTABA	782	A
200	476442	MUHAMMAD USMAN	817	A	213	412761	MISHKAT UL MISABIH	801	A	226	412825	IZNA-TUL-JANNAT	781	A
201	476362	M. AHMAD HAROON	815	A	214	476460	M. ABDULLAH AZHAR	801	A	227	476426	ANAS AHMAD	781	A
202	476458	AFFAN FAISAL	815	A	215	476399	MUHAMMAD ABDULLAH	797	A	228	476515	MUHAMMAD ALBASH	780	A
203	476424	MUHAMMAD HANZLA	814	A	216	476329	NASIR MAHMOOD	796	A	229	476352	ABDULLAH RAHEEL	777	A
204	412905	SIDRA	810	A	217	476367	YAHYA AHMAD BHATTI	796	A	230	412803	MEEERAB FATIMA	776	A
205	476343	MUHAMMAD RAYYAN YAWAR	809	A	218	476366	HAFIZ M. ASAD RAUF	794	A	231	476421	MUHAMMAD HYSIM WASEEM	774	A



RULES AND REGULATIONS

- ✔ The students admitted to City High School will abide by the rules and regulations of the School and their infringement will make him/her liable for strict disciplinary action such as fine, struck off the rolls or expulsion from the School.
 - ✔ Students shall show due respect to the teaching and other staff and to the fellow students.
 - ✔ Every student of the School is required to be punctual in the classes.
 - ✔ Any student remaining absent from the classes without proper permission for a continuous period of 7 days excluding holiday shall automatically be struck off the rolls unless the cause of absence is explained to the satisfaction of the Principal in which case the student may be re-admitted within 15 days after his/her name is dropped from the rolls.
 - ✔ No student is allowed to leave the class room without the permission of his/her teacher or until the class is over.
 - ✔ A student coming late in the school will be marked absent unless his/her excuse is accepted by the teacher.
 - ✔ Any student misbehaving in the class room shall at once be reported to the Principal by the teacher. The Principal will take such action as he may deem proper. The teacher can recommend a penalty also.
 - ✔ Wearing of School Uniform is compulsory without any relaxation. Students found defaulters may be fined and suspended from the school at the discretion of the Teacher/Principal.
 - ✔ Maintenance of school prestige and decorum would be the utmost duty of each student within and outside the School. Violating this will be concerned misconduct and may be reported in the Progress Report / Character Certificate of the concerned student.
 - ✔ Only those students shall be eligible for cadet colleges entry tests who qualify the send-up test of the school and have the required attendance during the session.
 - ✔ All dues payable to the school are not subject to refund in any case. A student who does not pay his /her dues/fine/penalties within the prescribed/notified time may be removed from the school.
 - ✔ The Principal in his own discretion may frame a class Time Table in conformity with the academic requirements and fix the time for the lectures in the school within the Morning/Evening sessions. All students will have to attend the classes, as and when announced by Principal according to the official time Table.
 - ✔ Copies of the certificates and photographs will not be returned even if admission is refused.
 - ✔ The decisions taken by the Principal in all disciplinary cases are final and cannot be challenged.
- NOTE:-** The school would not be responsible for the students arriving half an hour earlier or leaving half an hour later than the specified school timings.

SCHOLARSHIP OPPORTUNITIES FOR HIGH ACHIEVERS



I am writing to inform you about an exciting opportunity for high achievers at City High School. I am pleased to announce the availability of scholarships for outstanding students who have demonstrated exceptional academic performance in the Faisalabad Educational Board. These scholarships aim to support and encourage talented individuals to pursue their educational aspirations. The scholarships will be based on a comprehensive evaluation of academic records, extracurricular activities, and recommendations. I believe that investing in education is crucial for nurturing future leaders and innovators, and this scholarship initiative is our commitment to empowering the students. I look forward to the motivated and capable students.

Zahid Mehmood
Chief Executive
City High School, Faisalabad



